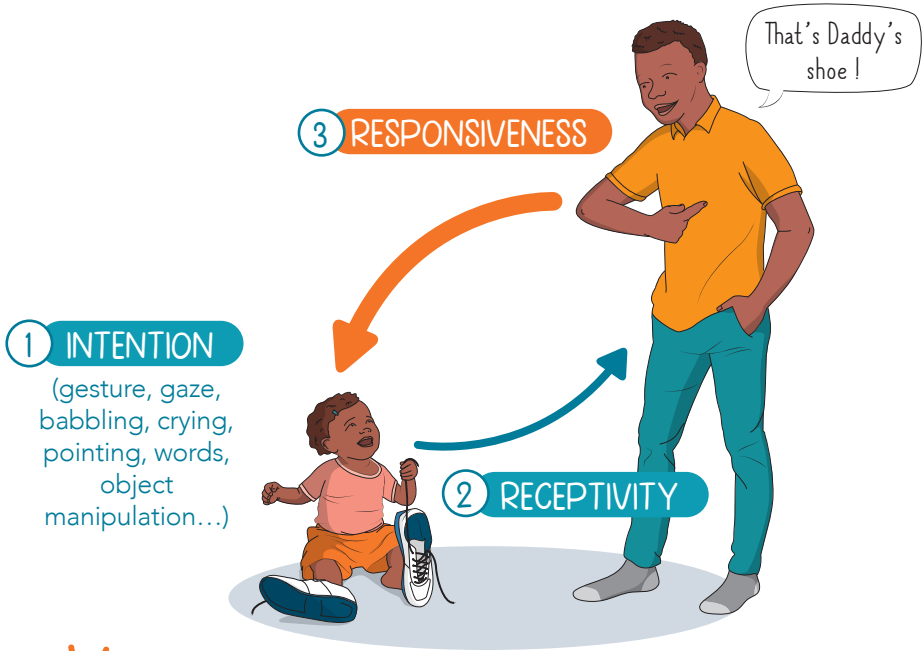


PARENT'S VERBAL RESPONSIVENESS

Thanks to the parent's responsiveness, the child understands that:

- Language allows people to **share intentions**
- There are links between **words, objects** or events



Discuss this with your child's speech therapist

UNIVERSAL CHARACTERISTICS OF RESPONSIVENESS:

- Fast (within 5 seconds after intention)
- Consistent with what the child is interested in
- Multimodal : look, speak, manipulate, show
- Adapted to the child's level

The right conditions for responsiveness:

- **Frequent**
- During the **routines** of daily life (e.g. meals, dressing, bathing, trips, visits, etc.)
- In **cordial** interactions